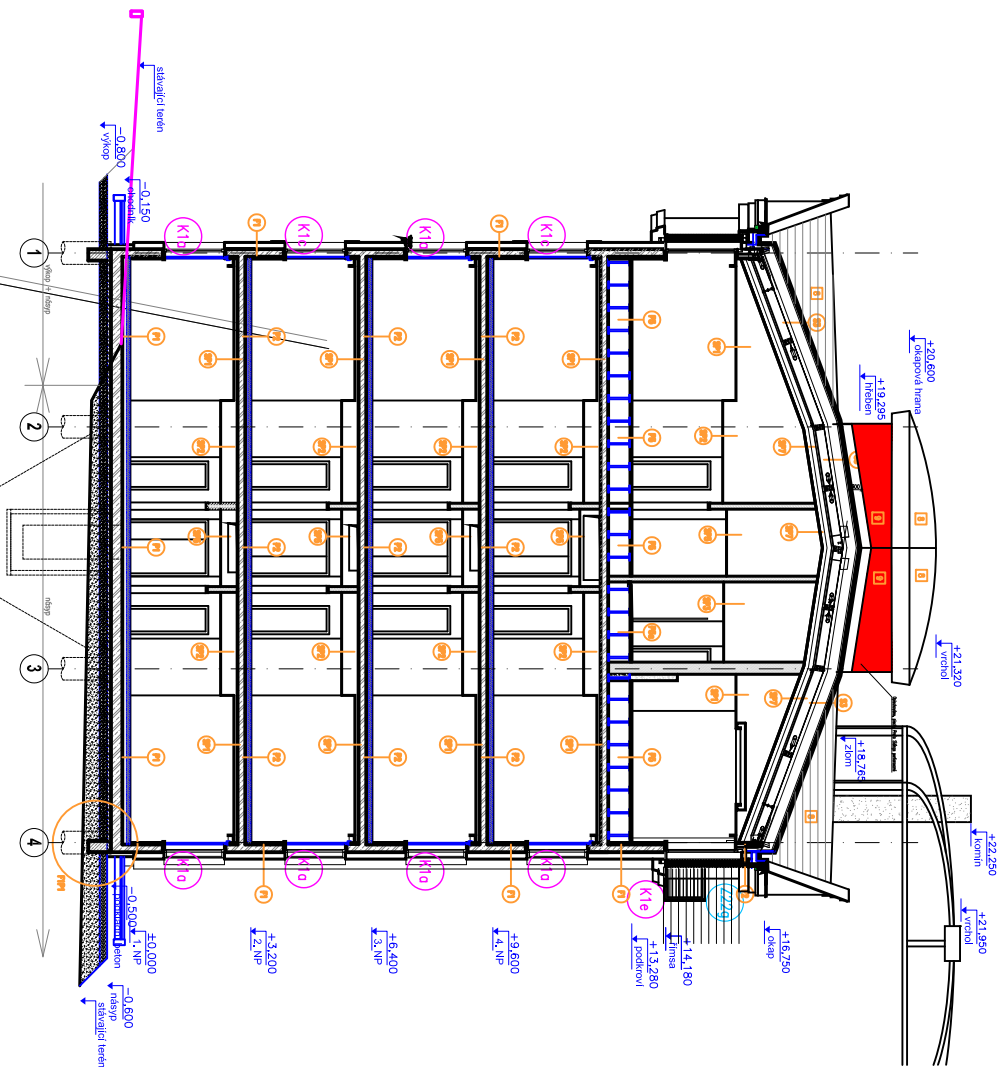
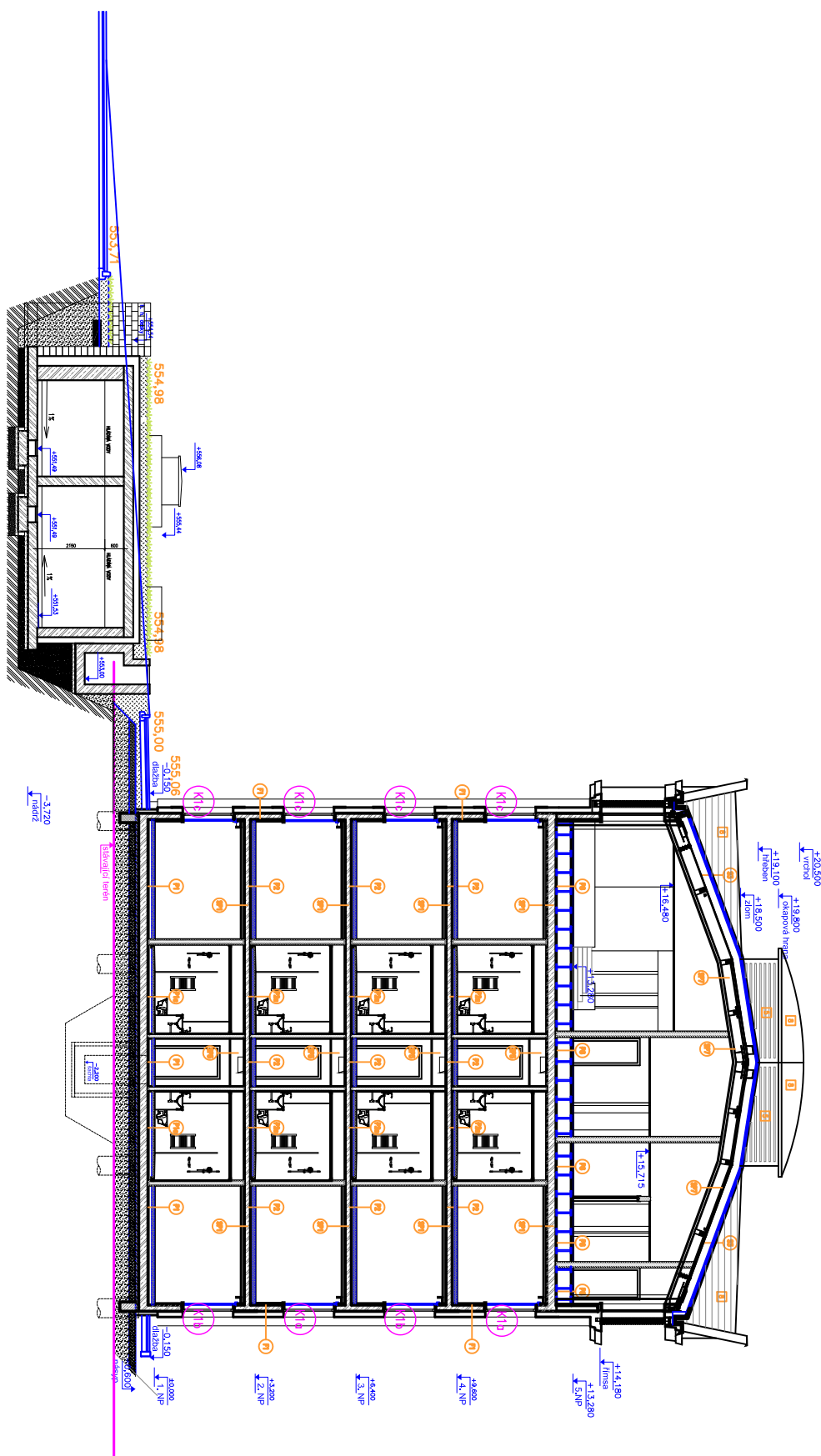


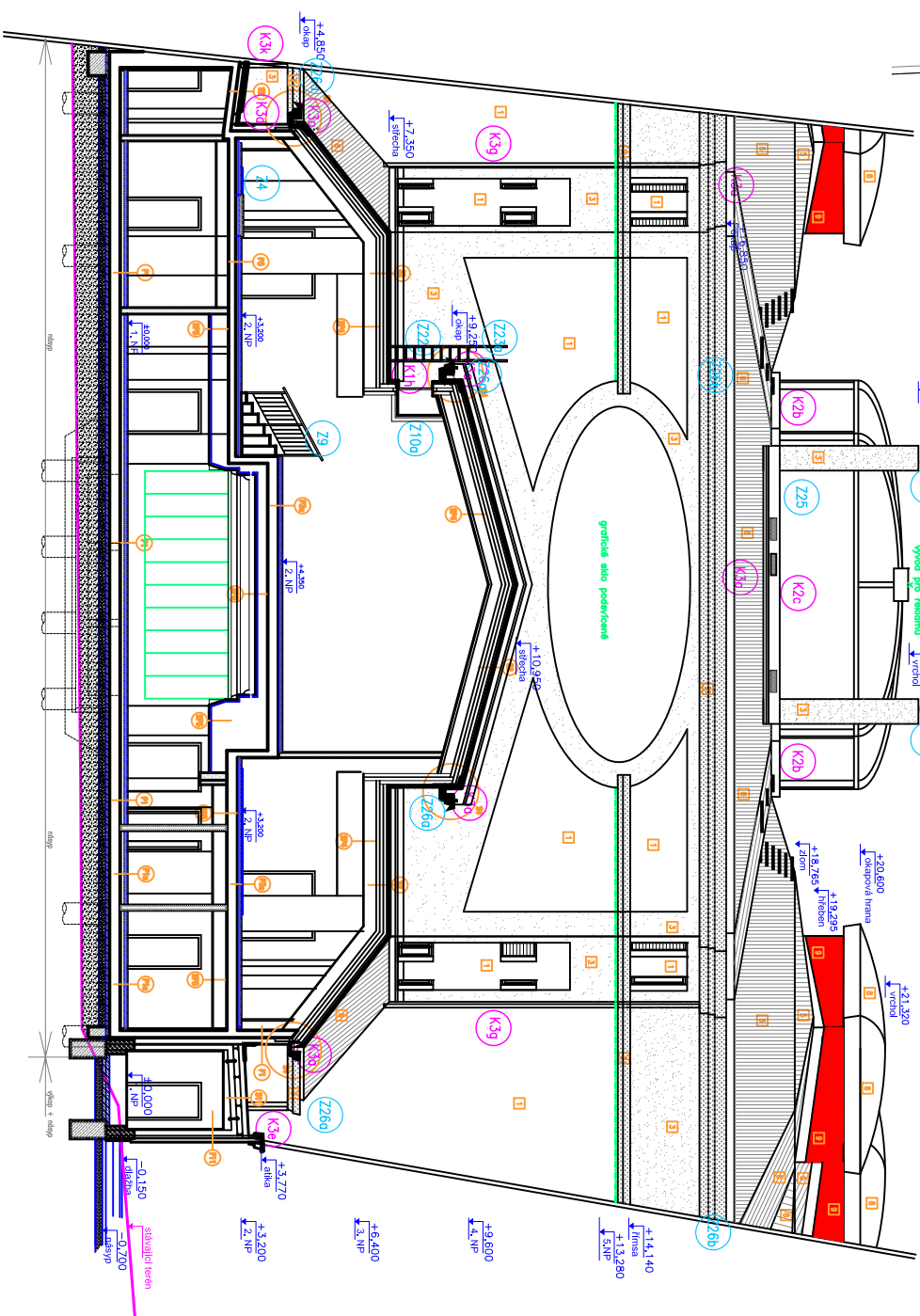
Řez A-A




Řez E-E



Řez D-D



	
Hotel King's Rozvadov Novostavba	
Řezy	
Autor: Ing. arch. Ivo Nantálka Ing. Nikola Alivjovčić Ing. Alena Kucerová	
Datum: 2.5.2017	
Měřítko: 1:200	
Revize: H	Vykes č.: 21